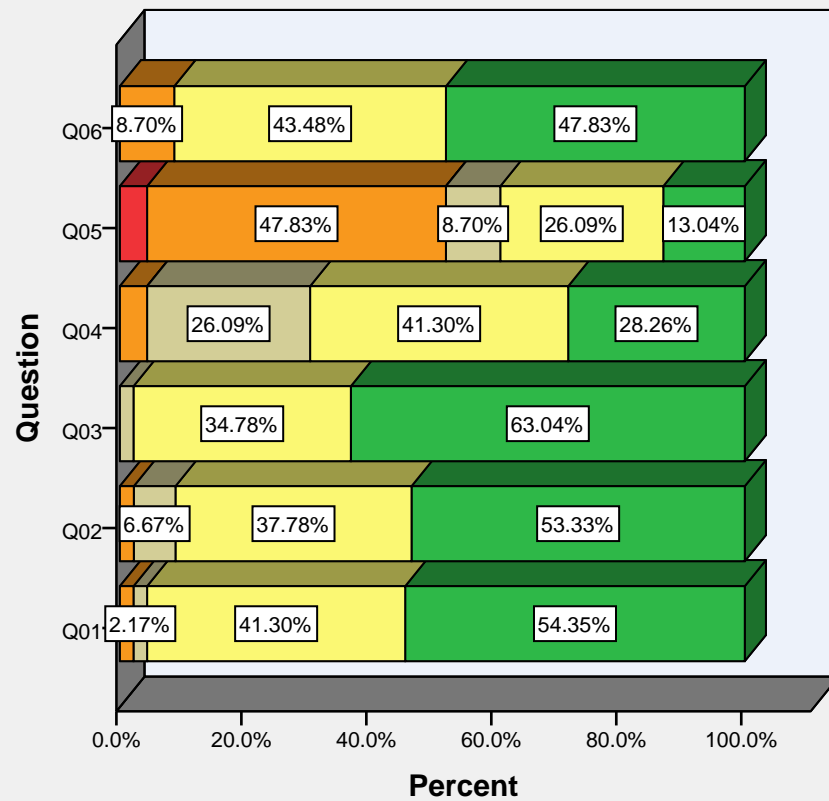


Summary statistics for questions 1 to 31 inclusive^a

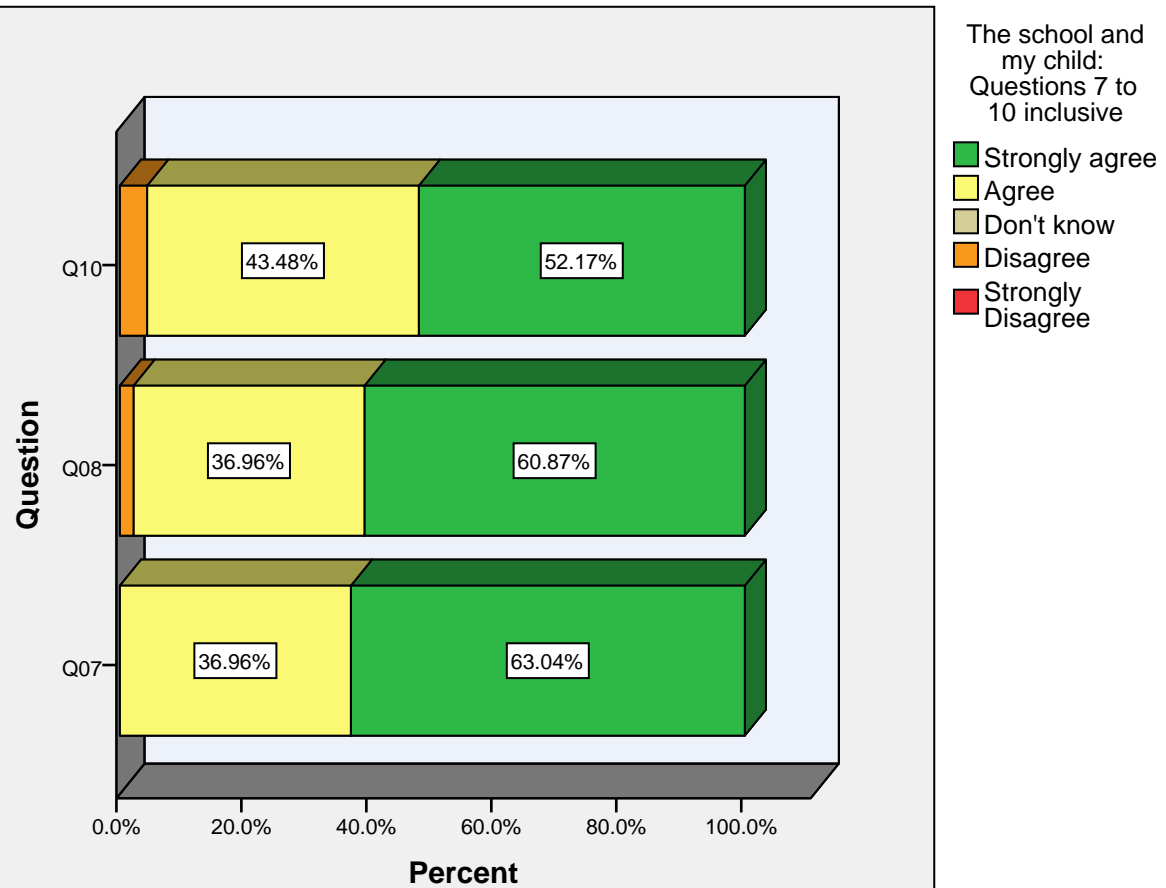
	Strongly agree Row N %	Agree Row N %	Don't know Row N %	Disagree Row N %	Strongly Disagree Row N %
Q1. Discipline is good in the school.	54.3%	41.3%	2.2%	2.2%	0.0%
Q2. I have been informed of the code of behaviour/school rules.	53.3%	37.8%	6.7%	2.2%	0.0%
Q3. There is a good atmosphere in the school.	63.0%	34.8%	2.2%	0.0%	0.0%
Q4. The school deals well with bullying.	28.3%	41.3%	26.1%	4.3%	0.0%
Q5. Facilities are good in the school.	13.0%	26.1%	8.7%	47.8%	4.3%
Q6. The school is well run.	47.8%	43.5%	0.0%	8.7%	0.0%
Q7. My child feels safe in school.	63.0%	37.0%	0.0%	0.0%	0.0%
Q8. The school helps my child's social and personal development.	60.9%	37.0%	0.0%	2.2%	0.0%
Q9. My child is treated fairly by the teacher(s).	65.2%	30.4%	2.2%	2.2%	0.0%
Q10. My child likes school.	52.2%	43.5%	0.0%	4.3%	0.0%
Q11. Teaching is good in the school.	60.9%	39.1%	0.0%	0.0%	0.0%
Q12. My child is doing well in school.	45.7%	52.2%	0.0%	2.2%	0.0%
Q13. The work my child is asked to do is matched to his/her ability.	50.0%	41.3%	6.5%	2.2%	0.0%
Q14. My child gets help from the teacher(s) when needed.	58.7%	41.3%	0.0%	0.0%	0.0%
Q15. My child gets homework most days.	73.9%	26.1%	0.0%	0.0%	0.0%
Q16. Teachers regularly correct my child's work.	58.7%	32.6%	4.3%	4.3%	0.0%
Q17. The school is helping my child to progress with reading.	58.7%	41.3%	0.0%	0.0%	0.0%
Q18. The school is helping my child to progress in Maths.	54.3%	45.7%	0.0%	0.0%	0.0%
Q19. My child has a PE lesson each week.	41.3%	32.6%	10.9%	15.2%	0.0%
Q20. The school is welcoming of parents.	60.9%	39.1%	0.0%	0.0%	0.0%
Q21. There are good arrangements for parent/teacher meetings.	50.0%	39.1%	8.7%	2.2%	0.0%
Q22. I know who to talk to in the school if there is a problem.	54.3%	43.5%	0.0%	2.2%	0.0%
Q23. I have been informed of the details of the relationships and sexuality policy of the school.	24.4%	35.6%	24.4%	13.3%	2.2%
Q24. I trust the school to deal fairly with complaints.	41.3%	43.5%	6.5%	6.5%	2.2%
Q25. I am expected to sign my child's homework or homework diary.	71.7%	26.1%	2.2%	0.0%	0.0%
Q26. School reports give me a good picture of how my child is doing.	54.3%	37.0%	8.7%	0.0%	0.0%
Q27. The board of management reports annually to parents on the work of the school.	34.8%	37.0%	15.2%	13.0%	0.0%
Q28. The school regularly seeks the views of parents on school matters.	30.4%	30.4%	15.2%	19.6%	4.3%
Q29. Financial contributions to help the running of the school are voluntary.	43.5%	45.7%	4.3%	4.3%	2.2%
Q30. The Parents' Association keeps me informed about its work.	41.3%	50.0%	8.7%	0.0%	0.0%
Q31 Overall I am happy with the school	65.2%	32.6%	2.2%	0.0%	0.0%

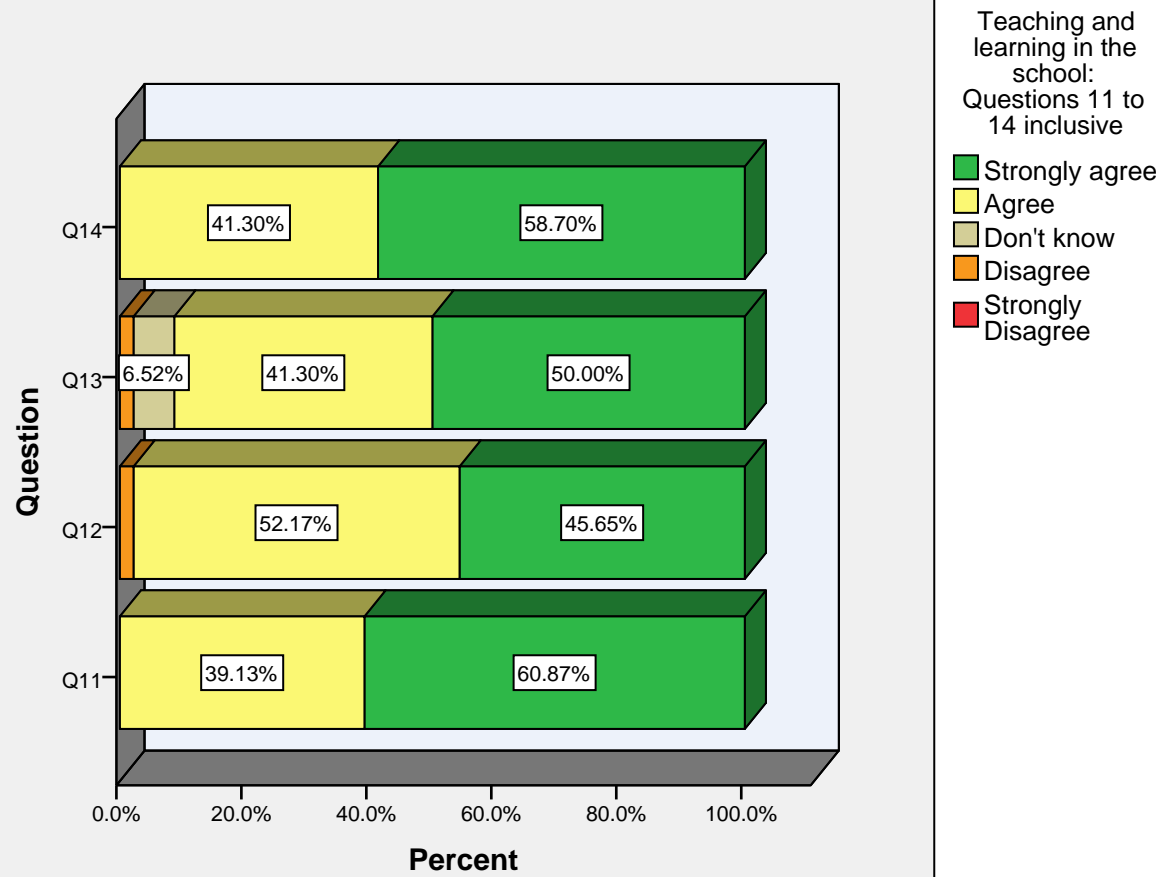
a. Roll = 18887A

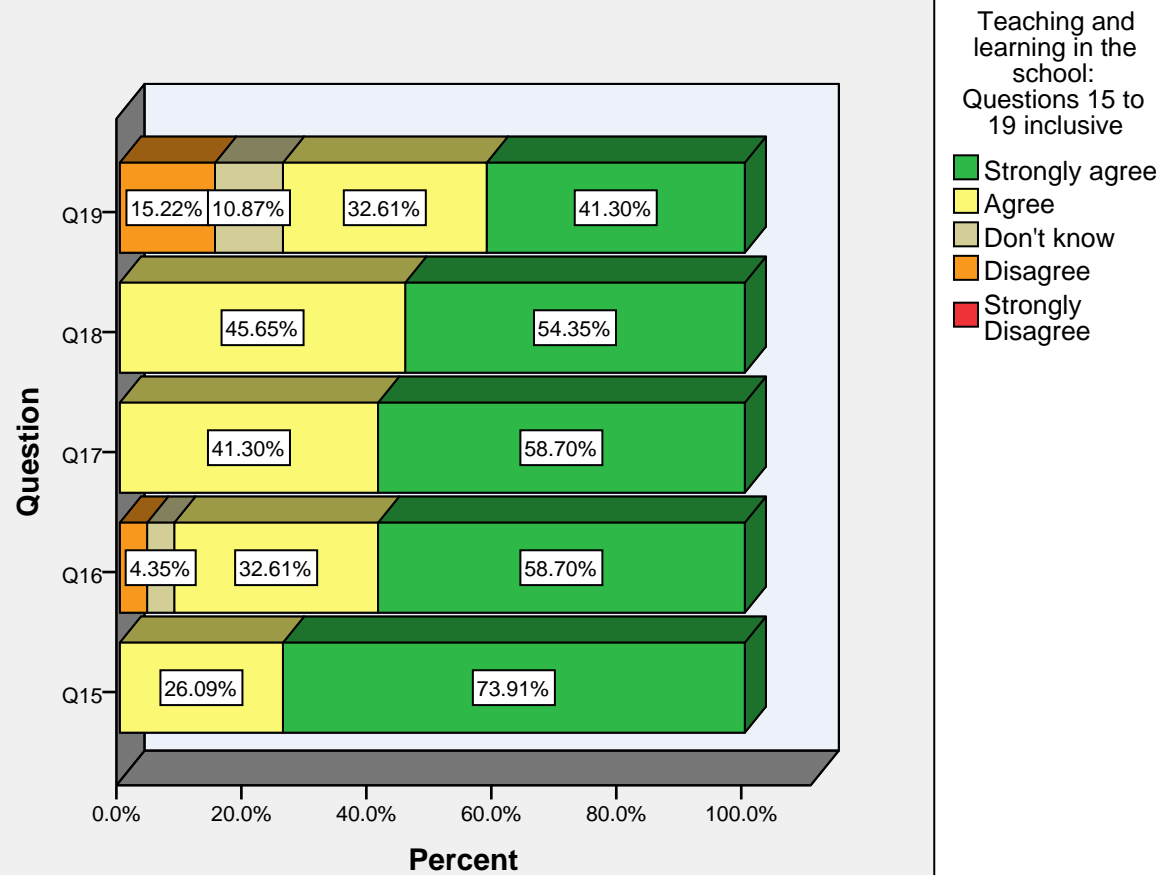


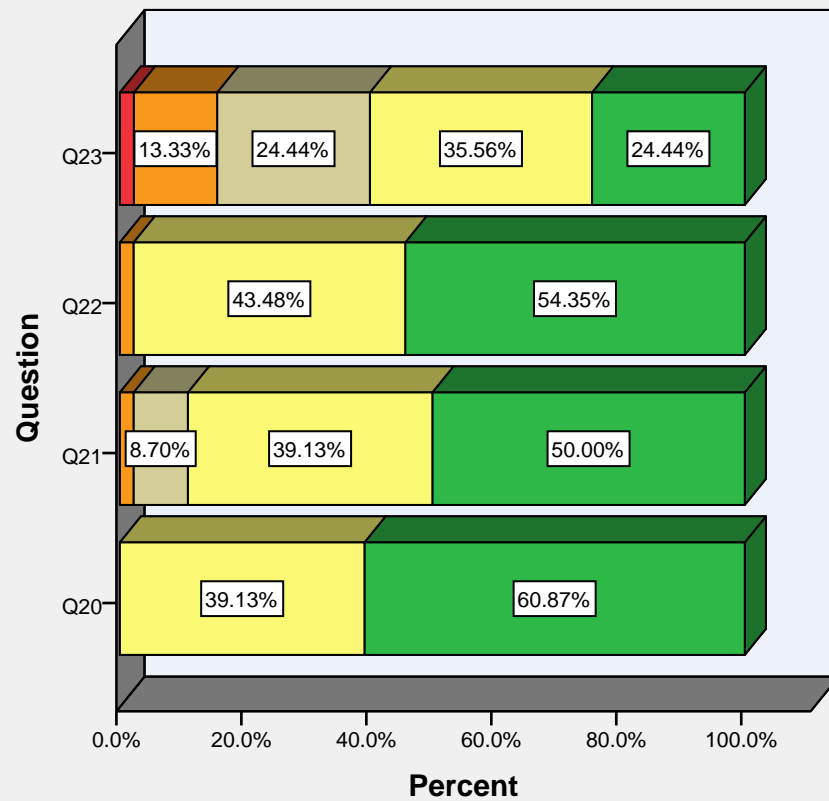
The school in general:
Questions 1 to 6 inclusive

- Strongly agree
- Agree
- Don't know
- Disagree
- Strongly Disagree



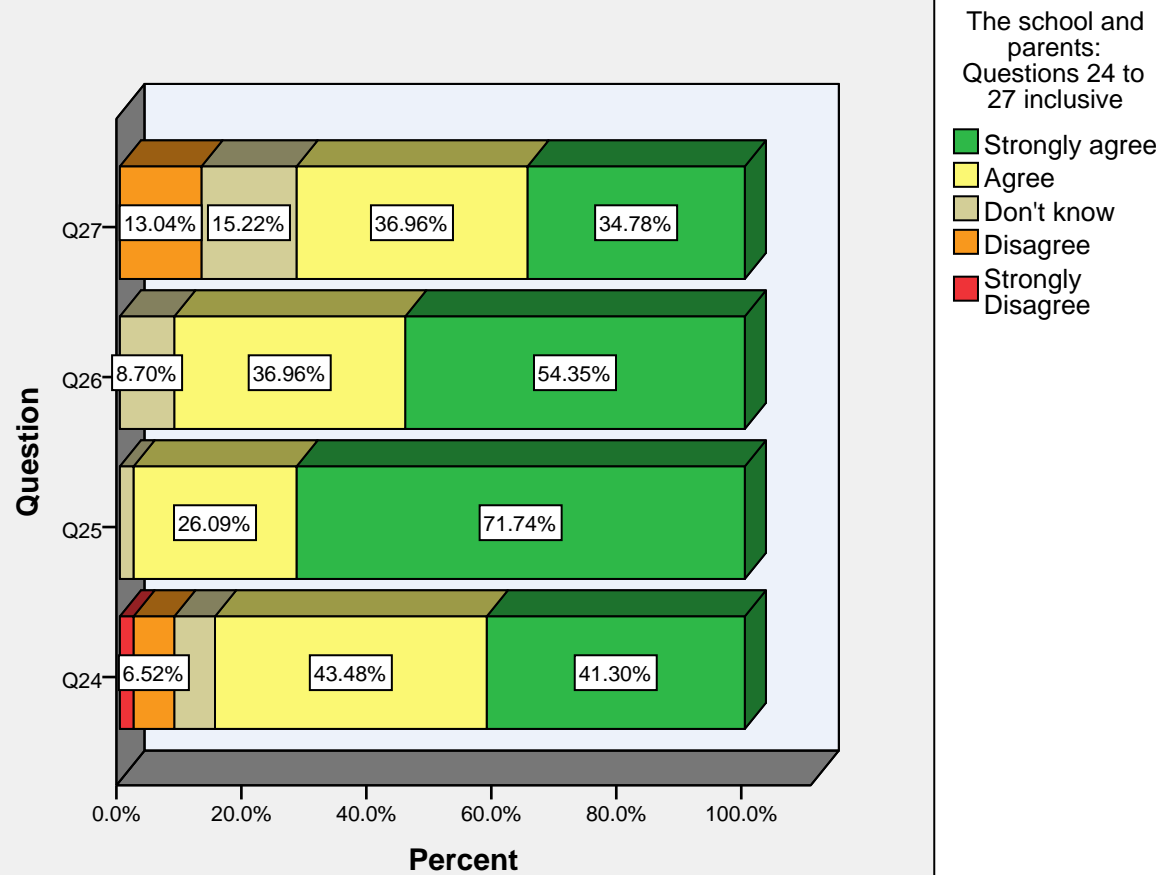


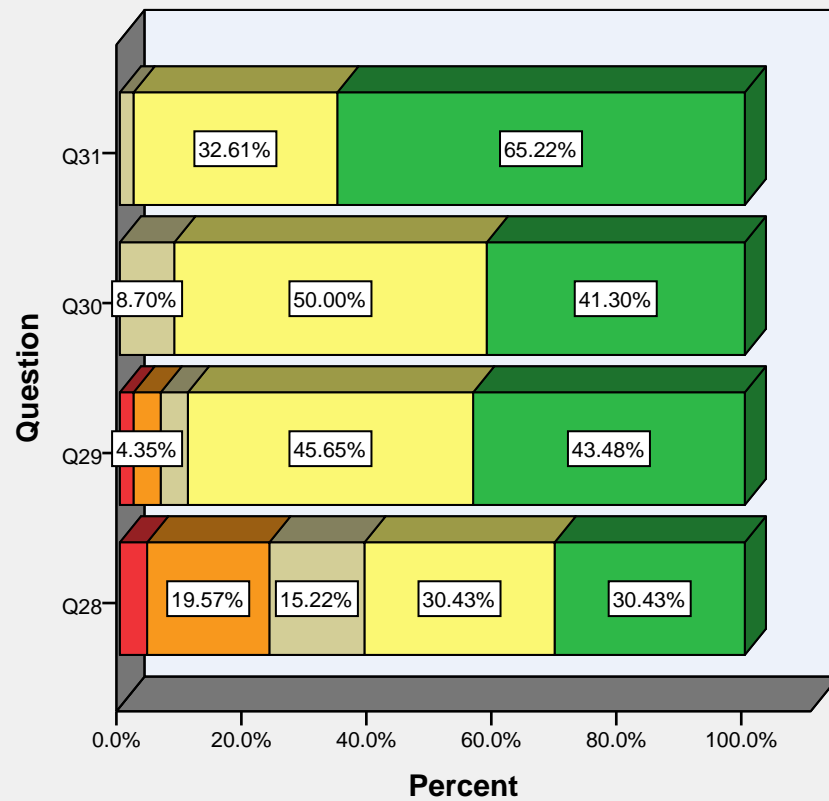




The school and
parents:
Questions 20 to
23 inclusive

- Strongly agree
- Agree
- Don't know
- Disagree
- Strongly Disagree





The school and
parents:
Questions 28 to
31 inclusive

- Strongly agree
- Agree
- Don't know
- Disagree
- Strongly Disagree